



1 Rosewood Drive, Sleaford, NG34 7JW
Offers in excess of £209,995

ENTRANCE HALL

Stairs to first floor, access to ground floor rooms

LIVING ROOM 14'1" x 11'9" (4.3 x 3.6)

Double glazed window to front aspect, carpet flooring, open plan to dining area

DINING ROOM 10'8" x 8'2" (3.27 x 2.49)

Double glazed doors to rear gardens, carpet flooring

KITCHEN AREA 14'10" x 10'8" (4.53 x 3.27)

Double glazed window to rear gardens, fitted with a matching range of floor and wall units with work surfaces over, integrated and free standing appliances

CLOAKROOM WC

Low level wc, wash hand basin

BEDROOM 12'5" x 8'11" (3.79 x 2.73)

Double glazed window, carpet flooring

BEDROOM 10'3" x 10'2" (3.14 x 3.11)

Double glazed window, carpet flooring

BEDROOM 9'5" x 8'3" (2.89 x 2.52)

Double glazed window, carpet flooring

SHOWER ROOM

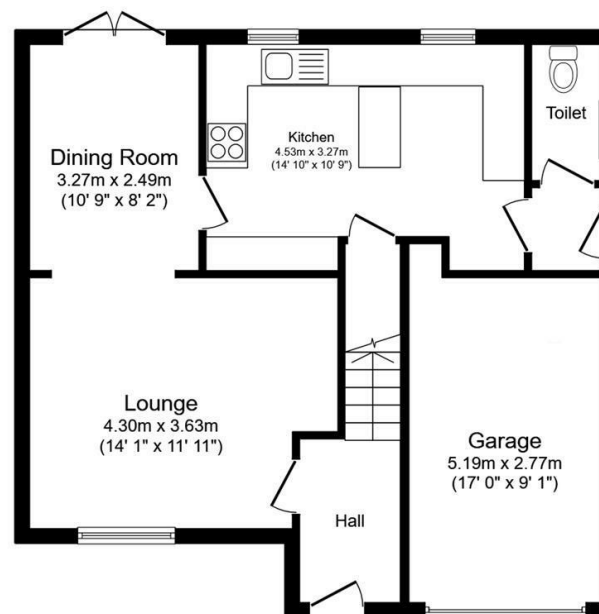
Frosted double glazed window, shower enclosure, low level wc, wash hand basin

GARAGE 17'0" x 9'1" (5.19 x 2.77)

Up and over door, power and light

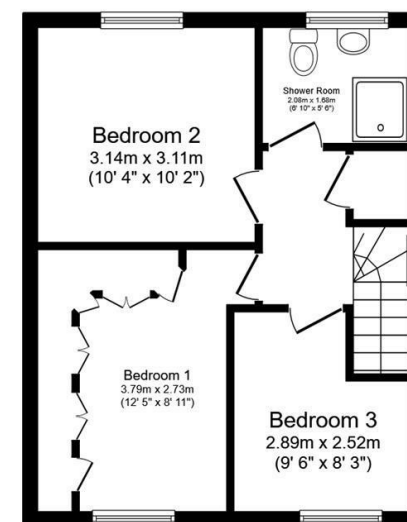
REAR GARDENS

Laid to lawn, fully enclosed, high degrees of privacy



Ground Floor

Floor area 62.3 sq.m. (671 sq.ft.)



First Floor

Floor area 37.4 sq.m. (403 sq.ft.)

Total floor area: 99.8 sq.m. (1,074 sq.ft.)

This floor plan is for illustrative purposes only. It is not drawn to scale. Any measurements, floor areas (including any total floor area), openings and orientations are approximate. No details are guaranteed, they cannot be relied upon for any purpose and do not form any part of any agreement. No liability is taken for any error, omission or misstatement. A party must rely upon its own inspection(s). Powered by www.Propertybox.io